



# SmartStriker X

Smart Spraying system

The right dose, in the right place



# SmartStriker X

## Real time localized weeding and modulation

Carbon Bee proposes SmartStriker X solution , its new generation "plug and spray" system allowing you to modulate your chemicals according to the needs of the crop and to spray only the weeds in different contexts:

- 🌿 **Green on Brown™** for intercrop & pre-mergent weeding (up to 95% savings),
- 🌿 **Green on Green™** for localized catch-up weeding in crops (up to 90% savings),
- 🌿 **Modulation** for herbicide, fungicide, nitrogen defanant real-time modulation

Application can be made:

- 🌿 In **Spot Spraying™** (localized spraying),
- 🌿 In **dual-dose** (high dose on weeds, low dose elsewhere)
- 🌿 In **modulation** (dose proportional to weeds or crop biomass)

The dual-dose applies a minimum dose continuously and increases the dose according to the agronomic conditions (stage, infestation).

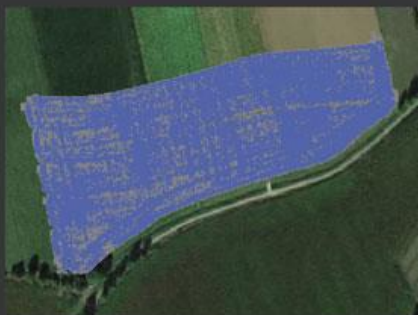
Modulation applies a dose proportional to the target biomass, weeds or crop, between a low-dose and a high-dose. This is useful in dirty context weeding, or to modulate nitrogen, fungicide or insecticide.

Thanks to its embedded artificial intelligence system, SmartStriker X™ takes control of your PWM to apply the right dose at the right place.

During each operation SmartStriker X™ maps the weeds and the application for optimal traceability and better monitoring of the infestation over the years.

## Significant reduction of chemicals

Use case SmartStriker™ on 9.5ha parcel



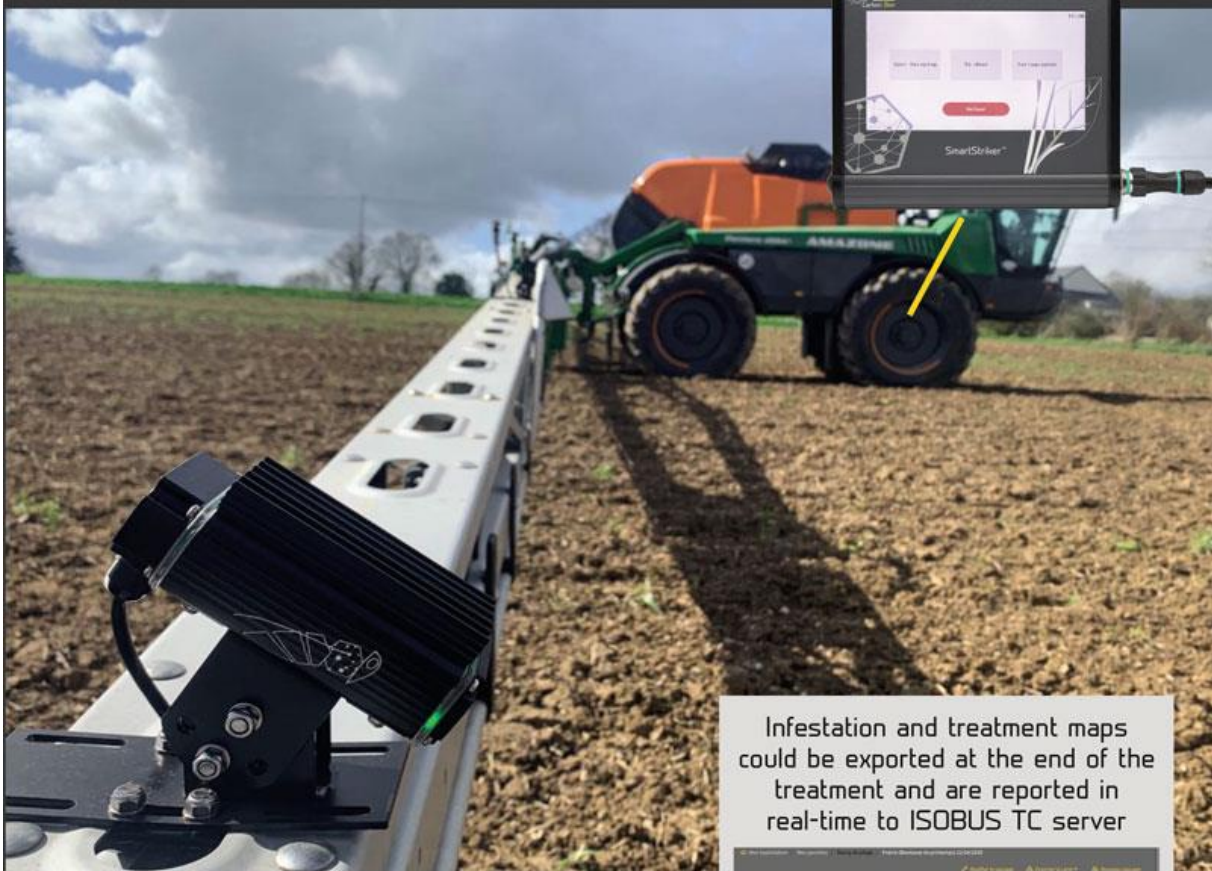
Agronomic context	Thistles detection in sugar beet crop
Used chemical	Lontel SG + oil
Chemical saving	80%
Economic gain	35€/ha
Weeding agronomic efficiency	80%

# by Carbon Bee

## A complete solution that can be easily integrated

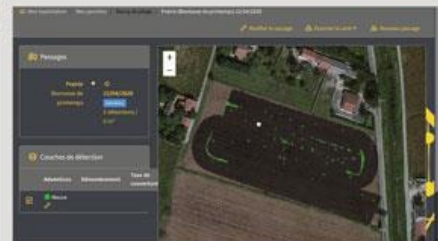
The Sensor takes and analyzes pictures in real time thanks to its embedded Artificial Intelligence.

The Console is the interface between the user and the system SmartStriker X.™  
Could be replaced with ISOBUS console in cab (VT and TC client)



Infestation and treatment maps could be exported at the end of the treatment and are reported in real-time to ISOBUS TC server

The Controller receives the information from the sensors and merges it to control the spraying and create the map in real time.



# SmartStriker X™

## Technical specifications

	Sensor X	Controller X	Console
Weight (kg)	0.5	1.5	1
Protection index	IP69K	IP69K	IP69K
Voltage (V)	10 - 60	10 - 60	10 - 60
Power (W)	5 max	5 max	5 max

### ISOBUS COMPATIBLE

#### SmartStriker X™ system

Number of sensors*	1 every 3m
Max work speed	Up to 25 km/h
PLM system compatibility	Raven - Teejet - BBLeap - Capstan Bethoud - Kuhn - Optima Concept Amazone - Agrifac - and Others



### CONTACT

Carbon Bee - France  
[contact@carbonbee.fr](mailto:contact@carbonbee.fr)

[www.carbonbee.fr](http://www.carbonbee.fr)

 CarbonBee  
 CBAgTech  
 CarbonBee




**Carbon Bee**

